

# DURALIE COAL MINE

**Quarterly Compliance Noise Monitoring  
January 2018**

Prepared for: Duralie Coal Ltd

SLR Ref: 630.11772  
Version No: -v1.0  
March 2018



## PREPARED BY

SLR Consulting Australia Pty Ltd  
ABN 29 001 584 612  
10 Kings Road  
New Lambton NSW 2305 Australia  
(PO Box 447 New Lambton NSW 2305 Australia)  
T: +61 2 4037 3200 F: +61 2 4037 3201  
E: newcastleau@slrconsulting.com www.slrconsulting.com

## BASIS OF REPORT

This report has been prepared by SLR Consulting Australia Pty Ltd with all reasonable skill, care and diligence, and taking account of the timescale and resources allocated to it by agreement with the Client. Information reported herein is based on the interpretation of data collected, which has been accepted in good faith as being accurate and valid.

This report is for the exclusive use of Duralie Coal Ltd. No warranties or guarantees are expressed or should be inferred by any third parties. This report may not be relied upon by other parties without written consent from SLR

SLR disclaims any responsibility to the Client and others in respect of any matters outside the agreed scope of the work.

## DOCUMENT CONTROL

Reference	Date	Prepared	Checked	Authorised
630.11772-R07-v1.0	15 March 2018	Martin Davenport	Robert Hall	Robert Hall

## CONTENTS

<b>1</b>	<b>INTRODUCTION.....</b>	<b>5</b>
<b>2</b>	<b>DCM NOISE LIMITS .....</b>	<b>5</b>
2.1	EPL Noise Limits .....	5
2.2	Project Approval Noise Limits.....	6
2.3	Rail Noise Limits.....	8
2.4	Low Frequency Noise.....	8
<b>3</b>	<b>OPERATIONAL NOISE MONITORING METHODOLOGY .....</b>	<b>9</b>
3.1	General Requirements.....	9
3.2	Methodology - Operator-attended Noise Monitoring Locations .....	9
<b>4</b>	<b>RESULTS.....</b>	<b>11</b>
4.1	Operator-attended Monitoring - DCM Operational Activity .....	11
4.1.1	Operator-attended Noise Survey Results - Monitoring Location NM1 .....	11
4.1.2	Operator-attended Noise Survey Results - Monitoring Location NM2 .....	12
4.1.3	Operator-attended Noise Survey Results - Monitoring Location NM4 .....	13
4.1.4	Operator-attended Noise Survey Results - Monitoring Location NM5 .....	14
4.1.5	Operator-attended Noise Survey Results - Monitoring Location WR1 .....	16
4.2	Operator-attended Rail Noise Monitoring .....	16
<b>5</b>	<b>PERFORMANCE ASSESSMENT .....</b>	<b>17</b>
5.1	Operational Noise .....	17
5.2	Sleep Disturbance .....	17
5.3	Rail Noise .....	18
<b>6</b>	<b>CONCLUSION .....</b>	<b>18</b>

## DOCUMENT REFERENCES

### TABLES

Table 1	EPL Noise Limits for the Nominated Attended Noise Monitoring Locations .....	6
Table 2	DCM Operational Noise Monitoring Locations .....	9
Table 3	Rail Noise Monitoring Locations.....	9
Table 4	Operator Attended Noise Survey Results – NM1 .....	12
Table 5	Attended Noise Survey Results – NM2.....	13
Table 6	Attended Noise Survey Results – NM4.....	14
Table 7	Attended Noise Survey Results – NM5.....	15

CONTENTS

Table 8      Attended Noise Survey Results – WR1 ..... 16

Table 9      Operator-attended Rail Noise Monitoring Results..... 16

Table 10     Performance Assessment – Operations ..... 17

Table 11     Performance Assessment – Sleep Disturbance ..... 17

FIGURES

Figure 1     Duralie Coal Mine Attended Noise Monitoring Locations..... 10

APPENDICES

Appendix A                  Acoustic Terminology

Appendix B                  Operator Attended Noise Survey Charts

# 1 Introduction

Duralie Coal Pty Limited (DCPL), a wholly owned subsidiary of Yancoal Australia Limited (Yancoal), has commissioned SLR Consulting Australia Pty Ltd (SLR) to conduct quarterly noise monitoring for the Duralie Coal Mine (DCM) operations guided by the requirements of the *Duralie Coal Mine Noise Management Plan* (NMP), Document No. NMP-R05-A, dated August 2017. This report presents the results and findings from the operator-attended noise surveys conducted between 22 January 2018 and 24 January 2018.

Coal production commenced at Duralie in 2003 using conventional open cut mining methods, operating 24 hours a day. The Duralie Extension Project (DEP) was approved under Project Approval (08\_0203) on 10 November 2011, with a maximum Run-of-Mine (ROM) coal mining rate of 3 million tonnes per annum (Mtpa). Sized Duralie ROM coal is loaded and railed to the Stratford Coal Mine (SCM) for coal washing before being transported on the North Coast Railway to the port of Newcastle.

The objectives of the noise monitoring programme for this operating period were as follows:

- Conduct three rounds of external operator-attended noise measurements at the five nominated locations listed in Project Approval, representative of receivers located in the north, west and south directions from the DCM. The monitoring locations are NM1, NM2, NM4, NM5 and the additional monitoring location WR1 representative of Wards River Village.

The three rounds comprise a single round within each of the day, evening and night-time periods as defined in the NSW *Industrial Noise Policy* (EPA 2000).

- Rail Noise Monitoring – Perform one round of external operator-attended noise measurements at the three nominated locations listed in Section 7.6 of the NMP, being: TN1 (Craven), TN2 (Wards River Village North) and TN3 (Wards River Village South).
- Quantify all sources of noise within each of the attended noise surveys, including measured and/or estimated contribution and maximum level of individual noise sources.
- Assess the noise emissions from the DCM and determine compliance with respect to the limits contained in the NMP.

This report uses specialist acoustic terminology. An explanation of common terms is provided in **Appendix A**.

## 2 DCM Noise Limits

### 2.1 EPL Noise Limits

The site specific noise limits of sub-section L4.1 of Section L4 *Noise Limits* of the EPA's Environment Protection Licence (EPL), EPL 11701 dated 8 November 2017, for the five nominated attended noise monitoring locations, are summarised in **Table 1**.

**Table 1 EPL Noise Limits for the Nominated Attended Noise Monitoring Locations**

Locality	LAeq(15minute)			LA1(1minute)
	Daytime	Evening	Night-time	Night-time
NM1 Woodley	35	35	35	45
NM2 Zulumovski North	35	35	35	45
NM4 Fisher-Webster	35	35	37	45
NM5 Moylan	35	35	35	45
WR1 Wards River Village	35	35	35	45

Additional conditions relating to the noise monitoring location and applicable meteorological conditions are outlined in sub-sections L4.2 (a) and L4.8 of EPL 11701 and are summarised below.

*L4.2 (a) with the  $L_{eq}$  (15-minute) noise limits in condition 4.1, the noise measurement equipment must be located:*

*Approximately on the property boundary, where any dwelling is situated 30 metres or less from the property boundary closest to the premises; or*

*Within 30 metres of a dwelling façade, but not closer than 3 m, where any dwelling on the property is situated more than 30 metres from the boundary closest to the premises.*

*Noise from the premises is to be measured at a distance within 30 metres of the locations identified in L4.1 to determine compliance with this condition.*

*L4.8 The noise limits set out in condition in L4.1 apply under all meteorological conditions except for the following:*

- a) wind speeds greater than 3 metres/second at 10 metres above ground level; or*
- b) Temperature Inversion conditions up to 3 degrees Celsius/100m and wind speeds greater than 2 metres/second at 10 metres above the ground level; or*
- c) Temperature inversion conditions greater than 3 degrees Celsius/100m.*

## 2.2 Project Approval Noise Limits

The Project approval conditions relating to the noise limits are as follows:

## NOISE

### Noise Criteria

- Except for the land referred to in Table 1, the Proponent shall ensure that the noise generated by the project does not exceed the criteria in Table 2 at any residence on privately-owned land or on more than 25 percent of any privately-owned land.

Table 2: Noise criteria dB(A)

Location	Day	Evening	Night	
	$L_{Aeq}(15 \text{ minute})$	$L_{Aeq}(15 \text{ minute})$	$L_{Aeq}(15 \text{ minute})$	$L_{A1}(1 \text{ minute})$
172 - Lyall	35	39	40	45
126 – Hamann Pixalu PL	35	35	39	45
123 – Oleksiuk & Carmody				
173 – Trigg & Holland	35	36	37	45
116 - Weismantel				
127 – Fisher-Webster	35	35	37	45
131(1) - Relton				
180 (1) - Thompson	35	36	36	45
95 - Smith & Ransley	35	35	36	45
144 - Wielgosinski				
169 - Williams	35	36	35	45
177 - Thompson				
All other privately-owned land	35	35	35	45

Notes:

- To identify the locations referred to in Table 2, see the figure in Appendix 3; and
- Noise generated by the project is to be measured in accordance with the relevant procedures and exemptions (including certain meteorological conditions) of the NSW Industrial Noise Policy.

However, these criteria do not apply if the Proponent has a written agreement with the relevant landowner to exceed the criteria, and the Proponent has advised the Department in writing of the terms of this agreement.

### Noise Acquisition Criteria

- If the noise generated by the project exceeds the criteria in Table 3 at any residence on privately-owned land or on more than 25 percent of any privately-owned land, then upon receiving a written request for acquisition from the landowner, the Proponent shall acquire the land in accordance with the procedures in Conditions 5 - 6 of Schedule 4.

Table 3: Noise acquisition criteria dB(A)  $L_{Aeq}(15min)$

Location	Day	Evening	Night
All privately-owned land	40	40	40

Notes:

- Noise generated by the project is to be measured in accordance with the relevant procedures and exemptions (including certain meteorological conditions) of the NSW Industrial Noise Policy; and
- For this condition to apply, the exceedences of the criteria must be systemic.

## Rail Noise

5. By the end of December 2011, or as otherwise agreed by the Director-General, the Proponent shall only use locomotives that are approved to operate on the NSW rail network in accordance with the noise limits in the ARTC's EPL (No. 3142).

## Operating Conditions

6. The Proponent shall:
  - (a) implement best practice noise management, including all reasonable and feasible noise mitigation measures to minimise the operational, low frequency and rail noise generated by the project; and
  - (b) regularly assess the real-time noise monitoring and meteorological forecasting data and relocate, modify, and/or stop operations on site to ensure compliance with the relevant conditions of this approval,to the satisfaction of the Director-General.

## 2.3 Rail Noise Limits

For the purpose of compliance with the NSW Project Approval, the key requirement is for notification of relevant private receivers adjacent to the rail line, where DCM maximum rail pass-by noise is above the 85 dBA  $L_{Amax}$  criteria provided in Condition 4 (e), Schedule 3. Schedule 3 Condition 4(e) of the DCPL Extension Project Approval states:

*On privately owned land between the Stratford and Duralie mines where the maximum pass-by rail traffic noise from the Project exceeds 85dB(A), the Proponent shall implement additional noise mitigation measures (such as double glazing, insulation, and/or air conditioning) at the residence in consultation with the owner. These measures must be reasonable and feasible.*

## 2.4 Low Frequency Noise

The "Duralie Modification Noise and Blasting Assessment" (prepared by SLR Consulting Australia dated 9 July 2014) included a low frequency analysis of C and A weighted intrusive noise levels in accordance with INP requirements which indicated that there is no dominant low-frequency content relating to noise emissions from the DCM. A full  $L_{Ceq}$  minus  $L_{Aeq}$  spectrum low frequency analysis was not conducted on the noise compliance measurements in this round of DCM noise monitoring as DCM noise contribution was not deemed to be the dominant noise source at any noise monitoring location and is therefore not addressed further in this report.



## 3 Operational Noise Monitoring Methodology

### 3.1 General Requirements

All acoustic instrumentation employed throughout the monitoring programme has been designed to comply with the requirements of AS IEC 61672.1 – 2004 *Electroacoustics—Sound level meters – Specifications*, AS IEC 61672.2-2004, AS IEC 61672.3-2004 and carried current NATA or manufacturer calibration certificates. Instrument calibration was checked before and after each measurement survey, with the variation in calibrated levels not exceeding  $\pm 0.5$  dBA.

### 3.2 Methodology - Operator-attended Noise Monitoring Locations

Noise monitoring was conducted guided by the requirements of the NMP.

Operator-attended noise measurements were conducted during the day, evening and night-time periods for a minimum of 15 minutes per period at each of the five nominated noise monitoring locations. The details of the operator-attended mine noise monitoring locations are contained within **Table 2** and shown in **Figure 1**. During the operator attended noise measurements, the character and relative contribution of ambient noise sources and mine contributions were determined.

**Table 2 DCM Operational Noise Monitoring Locations**

Monitoring Location	Receiver Type	Resident / Owner	Monitoring Location - MGA Zone 56	
			Easting (m)	Northing (m)
NM1	Residence	Woodley <sup>1</sup>	400644	6421907
NM2 <sup>2</sup>	Residence	Zulumovski North	399042	6430384
NM4	Residence	Fisher-Webster	396790	6428961
NM5	Residence	Moylan	396770	6428945
WR1	Residence	Ward Street - Representative of Wards River Village	399556	6434229

Note 1: Woodley property has changed ownership but will retain the title of 'Woodley' until a License revision.

Note 2: Yancoal owned property.

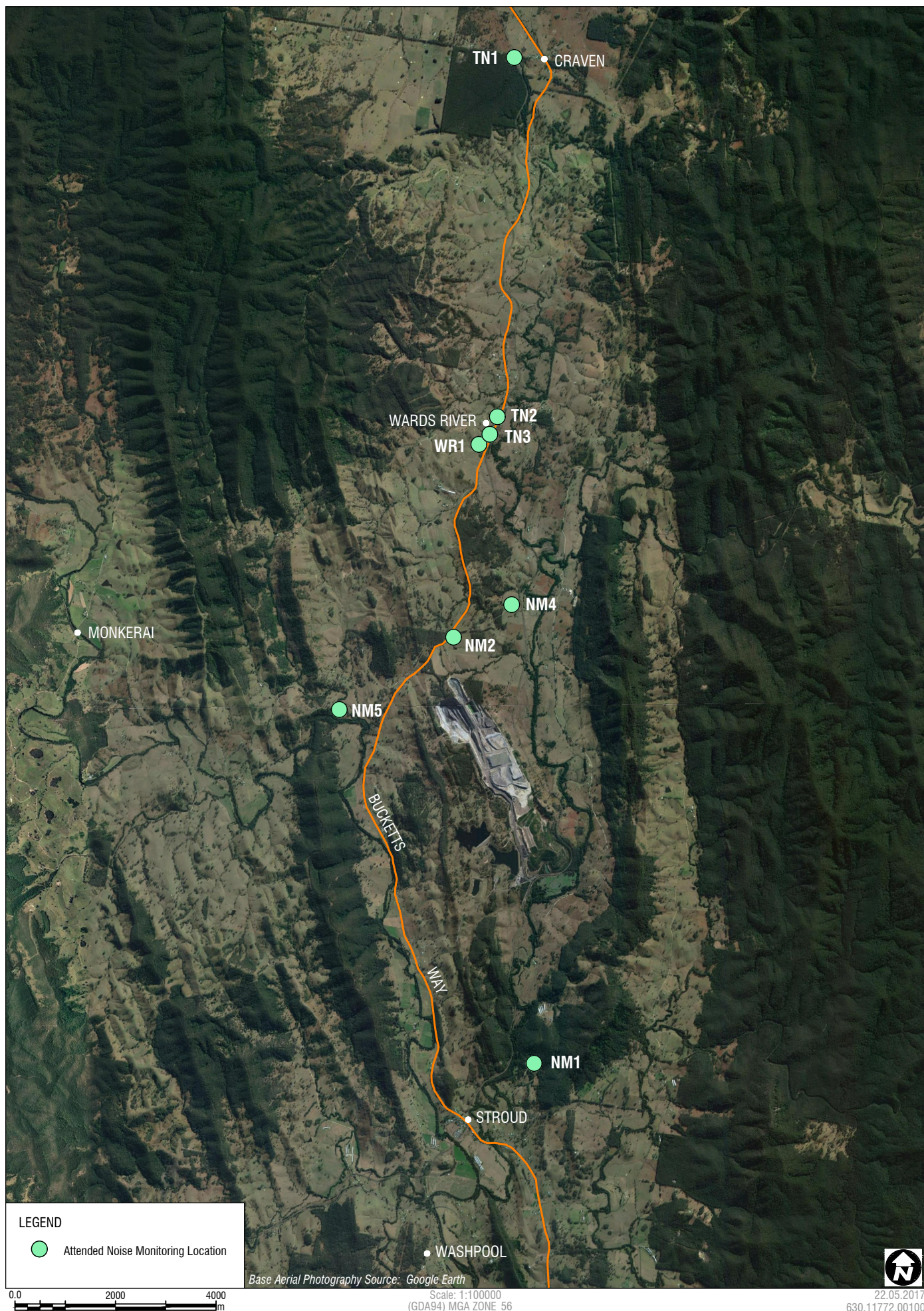
The details of the operator-attended rail noise monitoring locations are contained within **Table 3** and shown in **Figure 1**.

**Table 3 Rail Noise Monitoring Locations**

Monitoring Location	Receiver Type	Resident / Owner	Monitoring Location - MGA Zone 56	
			Easting (m)	Northing (m)
TN1	Residence	Craven	400252	6441916
TN2	Residence	Wards River Village North	399914	6434771
TN3	Residence	Wards River Village South	399765	6434421



H:\Projects\SLR\630-Srv\NTL\630-NTL\630-11772 Duralle Coal Quarterly Noise Monitoring\06 SLR Data\01 Drafting\Figures\CAD\CURRENT\Fg1\_630.11772.00100\_AttenNMLocs\_V4.dwg





The objective of the DCM operational operator-attended noise monitoring was to measure the maximum ( $L_{Amax}$ ) and the  $L_{Aeq(15minute)}$  noise level contributions at the nearest potentially affected receptors to determine the noise contribution of mining activities associated with Duralie Coal Mine operations over a 15 minute measurement period. In addition, the operator quantifies and characterises the overall levels of ambient noise in the area (i.e.  $L_{Amax}$ ,  $L_{A1}$ ,  $L_{A10}$ ,  $L_{A90}$ , and  $L_{Aeq}$ ) over the 15 minute measurement interval. The objective of the rail noise monitoring was to determine maximum rail pass-by noise levels from the Duralie Shuttle.

All operator-attended noise measurements were conducted using a one-third octave integrating Brüel & Kjær Type 2270 sound level meter (s/n 2679354).

## 4 Results

### 4.1 Operator-attended Monitoring - DCM Operational Activity

Operator-attended noise measurements were conducted during the day, evening and night periods commencing on Monday 22 January 2018. Results of the operator-attended noise surveys at NM1, NM2, NM4 and NM5 and at the additional monitoring location WR1 are provided in **Table 4** to **Table 8**, respectively.

A summary of the results for the operator-attended noise monitoring are displayed graphically in **Appendix B**. Charts of the noise surveys show  $L_{Amax}$ ,  $L_{Aeq}$ , and  $L_{Aeq(<1.25kHz)}$  in 1-second intervals throughout the monitoring survey.

Ambient noise levels presented include all noise sources such as transport (roads, rail and aircraft), fauna (insects, frogs, birds, and bats), farm animals, the natural environment (wind in trees), domestic noises, other industrial operations as well as Duralie Coal Mine noise emissions.

Weather data during the monitoring period has been obtained from the weather station located on the Duralie Coal Mine site. Where this data was not available meteorological conditions have been estimated based on observed conditions during the monitoring period.

The tables provide the following information:

- Date and start time, operator and equipment details.
- Monitoring location.
- Wind velocity (m/s) and temperature (°C) at the measurement location.
- Typical maximum ( $L_{Amax}$ ) and contributed  $L_{Aeq(15minute)}$  noise levels.

#### 4.1.1 Operator-attended Noise Survey Results - Monitoring Location NM1

Results of the operator-attended noise surveys at NM1 are provided in **Table 4**. Monitoring location NM1 represents residential receptors located to the south of the site. Due to access restrictions noise monitoring was conducted at the entrance to the property.

**Table 4 Operator Attended Noise Survey Results – NM1**

Period	Date/Start Time/ Weather	Primary Noise Descriptor					Description of Noise Emissions and Typical Maximum Noise Levels (dBA)
		L <sub>Amax</sub>	L <sub>A1</sub>	L <sub>A10</sub>	L <sub>A90</sub>	L <sub>Aeq</sub>	
Day	22/1/18 14:30 38°C 1.5 m/s NW	61	53	52	46	49	<i>Site related noise events:</i> <b>Duralie Coal Mine: Inaudible</b> <i>Other noise events:</i> Insects 46-51 Wind in trees 47-51 Tree branch falling 61 Distant traffic 28-33
Evening	23/1/18 21:45 25°C 4 m/s NE	50	44	40	36	38	<i>Site related noise events:</i> <b>Duralie Coal Mine: Inaudible</b> <i>Other noise events:</i> Aeroplane 50 Insects 34-41 Distant traffic 30 Wind in trees 32-43
Night	23/1/18 22:02 24°C 2.5 m/s NNE 2 cc	42	39	37	34	36	<i>Site related noise events:</i> <b>Duralie Coal Mine: Inaudible</b> <i>Other noise events:</i> Insects 34-41 Distant traffic 30-34 Wind in trees 32-42

DCM operations were inaudible during all operator-attended noise surveys at this location.

Noise sources at this location generally included natural noise sources such as birdsong, insects, and wind, as well as transport related noise such as aircraft flyover noise, rail movements and road traffic noise.

#### 4.1.2 Operator-attended Noise Survey Results - Monitoring Location NM2

Results of the operator-attended noise surveys at NM2 are provided in **Table 5**. Monitoring location NM2 represents residential receptors located to the north of the site.

**Table 5 Attended Noise Survey Results – NM2**

Period	Date/Start Time/ Weather	Primary Noise Descriptor					Description of Noise Emissions and Typical Maximum Noise Levels (dBA)
		L <sub>Amax</sub>	L <sub>A1</sub>	L <sub>A10</sub>	L <sub>A90</sub>	L <sub>Aeq</sub>	
Day	22/1/18 15:39 35°C 2-3 m/s NE 3 cc	57	51	47	38	44	<i>Site related noise events:</i> <b>Duralie Coal Mine: Inaudible</b> <i>Other noise events:</i> Road traffic 46-57 Birdsong 55 Wind in trees 34-47 Insects 34-36
Evening	23/1/18 18:05 31°C 3 m/s NE 5 cc	62	59	55	46	52	<i>Site related noise events:</i> <b>Duralie Coal Mine: Inaudible</b> <i>Other noise events:</i> Birdsong 54 Wind in trees 46-62
Night	22/1/2018 22:28 28°C 2 m/s NE 5 cc	52	46	43	37	40	<i>Site related noise events:</i> <b>Duralie Coal Mine: Inaudible</b> <i>Other noise events:</i> Wind in trees 33-40 Insects 30-31 Road Traffic 48-52

DCM operations were inaudible during all operator-attended noise surveys at this location.

Noise sources at this location generally included natural noise sources such as birdsong, insects, and wind, as well as transport related noise such as aircraft flyover noise, rail movements and road traffic noise.

#### 4.1.3 Operator-attended Noise Survey Results - Monitoring Location NM4

Results of the operator-attended noise surveys at NM4 are provided in **Table 6**. NM4 represents residential receptors located to the north of the site.

**Table 6 Attended Noise Survey Results – NM4**

Period	Date/Start Time/ Weather	Primary Noise Descriptor					Description of Noise Emissions and Typical Maximum Noise Levels (dBA)
		L <sub>Amax</sub>	L <sub>A1</sub>	L <sub>A10</sub>	L <sub>A90</sub>	L <sub>Aeq</sub>	
Day	24/1/18 10:31: 28°C 1 m/s NE 1 cc	52	48	44	37	41	<i>Site related noise events:</i> <b>Duralie Coal Mine: Inaudible</b> <i>Other noise events:</i> Aeroplane 51 Insects 35-39 Birdsong 40-45 Road traffic 36-52 Livestock 39
Evening	22/1/18 21:46 29°C 2 m/s NE 3 cc	61	59	44	33	46	<i>Site related noise events:</i> <b>Duralie Coal Mine: Inaudible</b> <i>Other noise events:</i> Train 61 Insects 32-35 Road traffic 36 Wind in trees 30-34
Night	22/1/18 22:01 28°C 1 m/s NE 5 cc	41	35	34	31	33	<i>Site related noise events:</i> <b>Duralie Coal Mine: Inaudible</b> <i>Other noise events:</i> Insects 32-35 Road traffic 34-41 Wind in trees 27-30

DCM operations were inaudible during all operator-attended noise surveys at this location.

The ambient noise environment at the monitoring location during all operator-attended noise surveys generally consisted of natural noise sources such as wind, insects and birdsong as well as local and distant road traffic.

#### 4.1.4 Operator-attended Noise Survey Results - Monitoring Location NM5

Results of the operator-attended noise surveys at NM5 are provided in **Table 7**. Monitoring location NM5 represents residential receptors located to the west of the site.

**Table 7 Attended Noise Survey Results – NM5**

Period	Date/Start Time/ Weather	Primary Noise Descriptor					Description of Noise Emissions and Typical Maximum Noise Levels (dBA)
		L <sub>Amax</sub>	L <sub>A1</sub>	L <sub>A10</sub>	L <sub>A90</sub>	L <sub>Aeq</sub>	
Day	22/1/18 15:11 40°C 3m/s ENE 2 cc	55	51	43	36	41	<i>Site related noise events:</i> <b>Duralie Coal Mine: Inaudible</b> <i>Other noise events:</i> Road traffic 32-39 Birdsong 44-51 Wind 30-40 Insects 35-55
Evening	23/1/18 18:50 30°C 1 m/s NE 3 cc	61	57	44	37	44	<i>Site related noise events:</i> <b>Duralie Coal Mine: Audible</b> Haul trucks 24-29 Dozer 24-27 Dump 31 <b>L<sub>Aeq</sub>(15minute) contribution 26 dBA</b> <i>Other noise events:</i> Insects 37-59 Livestock 55 Birdsong 41-61 Road traffic 30-41
Night	23/1/18 22:41 24°C 1 m/s NNE 3 cc	44	39	37	34	36	<i>Site related noise events:</i> <b>Duralie Coal Mine: Audible</b> Engine noise 24-25 Dump 30 <b>L<sub>Aeq</sub>(15minute) contribution &lt;25 dBA</b> <b>L<sub>Amax</sub> contribution 30 dBA</b> <i>Other noise events:</i> Insects 33-37 Road traffic 30-44

DCM operations were audible during the evening and night period noise surveys at this location. The DCM source identified included engine/mechanical noise and dumping.

The ambient noise environment at the monitoring location during all attended noise monitoring surveys was dominated by natural noise sources and road traffic noise.

The DCM L<sub>Aeq</sub>(15minute) noise contribution was estimated to be 26 dBA and less than 25 dBA during the evening and night period, respectively.

During the night-time noise monitoring survey dumping resulted in a L<sub>Amax</sub> noise level of 30 dBA.

#### 4.1.5 Operator-attended Noise Survey Results - Monitoring Location WR1

Results of the operator-attended noise surveys at WR1 are provided in **Table 8**. This location is representative of residential receptors located in Ward Street, Wards River.

**Table 8 Attended Noise Survey Results – WR1**

Period	Date/Start Time/Weather	Primary Noise Descriptor					Description of Noise Emissions and Typical Maximum Noise Levels (dBA)
		L <sub>Amax</sub>	L <sub>A1</sub>	L <sub>A10</sub>	L <sub>A90</sub>	L <sub>Aeq</sub>	
Day	24/1/18 10:05 28°C 1 m/s NE 1 cc	61	48	41	35	39	<i>Site related noise events:</i> <b>Duralie Coal Mine: Inaudible</b> <i>Other noise events:</i> Road traffic 37-45 Birdsong 47-61 Insects 34-39 Wind in trees 36
Evening	22/1/18 21:15 28°C 2 m/s NNE 2 cc	62	52	41	34	41	<i>Site related noise events:</i> <b>Duralie Coal Mine: Inaudible</b> <i>Other noise events:</i> Road traffic 39-52 Residents 62 Insects 34-42
Night	22/1/18 22:55 26°C 1 m/s 3 cc	49	39	37	33	35	<i>Site related noise events:</i> <b>Duralie Coal Mine: Inaudible</b> <i>Other noise events:</i> Road traffic 49 Insects 32-39

DCM operations were inaudible during all operator-attended noise surveys at this location. The ambient noise environment at the monitoring location during all operator-attended noise surveys was dominated by road traffic. Other sources included insects, livestock and residential noise.

## 4.2 Operator-attended Rail Noise Monitoring

Duralie Shuttle rail pass-by noise levels are presented in **Table 9**.

**Table 9 Operator-attended Rail Noise Monitoring Results**

Monitoring Location	Date and Time	L <sub>Amax</sub> (dBA)	
		Horn Included	Horn Excluded
TN1	23/1/2018 15:09	82	82
TN2	23/1/2018 15:26	82	76
TN3	23/1/2018 17:32	81	81

Maximum Duralie Shuttle rail pass-by noise levels were below 85 dBA at all monitoring locations, including the sounding of horns on approach to level crossings.



## 5 Performance Assessment

### 5.1 Operational Noise

Results of the operator-attended noise measurements compared with the relevant noise criteria contained in the Project Approval and EPL 11701 are given in **Table 10**.

**Table 10 Performance Assessment – Operations**

Location	Estimated DCM LAeq(15minute) Contribution dBA			Noise Criteria LAeq(15minute) dBA			Compliance		
	Day	Eve	Night	Day	Eve	Night	Day	Eve	Night
NM1	I/A <sup>1</sup>	I/A <sup>1</sup>	I/A <sup>1</sup>	35	35	35	Yes	Yes	Yes
NM2 <sup>2</sup>	I/A <sup>1</sup>	I/A <sup>1</sup>	I/A <sup>1</sup>	35	35	35	Yes	Yes	Yes
NM4	I/A <sup>1</sup>	I/A <sup>1</sup>	I/A <sup>1</sup>	35	35	37	Yes	Yes	Yes
NM5	I/A <sup>1</sup>	26	<25	35	35	35	Yes	Yes	Yes
WR1	I/A <sup>1</sup>	I/A <sup>1</sup>	I/A <sup>1</sup>	35	35	35	Yes	Yes	Yes

1. I/A = Inaudible.
2. Yancoal owned property.

Results presented in **Table 10** indicate that compliance with the relevant criteria was achieved at all operator-attended noise monitoring locations at all time periods.

### 5.2 Sleep Disturbance

Results of the night period sleep disturbance measurements compared with the relevant noise criteria contained in the Project Approval and EPL 11701 are given in **Table 11**.

**Table 11 Performance Assessment – Sleep Disturbance**

Location	DCM LA1(1minute) Contribution	Noise Criteria LA1(1minute)	Compliance
NM1	I/A <sup>1</sup>	45	Yes
NM2 <sup>2</sup>	I/A <sup>1</sup>	45	Yes
NM4	I/A <sup>1</sup>	45	Yes
NM5	30	45	Yes
WR1	I/A <sup>1</sup>	45	Yes

1. I/A = Inaudible.
2. Yancoal owned property

**Table 11** indicates that compliance with the relevant sleep disturbance noise criteria was achieved at all noise monitoring locations during the night-time noise monitoring period.

## 5.3 Rail Noise

Maximum Duralie Shuttle rail pass-by noise levels were below 85 dBA at all monitoring locations, including the sounding of horns on approach to level crossings.

## 6 Conclusion

SLR has conducted quarterly noise monitoring for the DCM guided by the requirements of the NMP.

Operator-attended noise monitoring was conducted at five locations between Monday 22 January 2018 and Wednesday 24 January 2018 in order to determine the noise performance of the DCM operations, has resulted in the following compliance for each assessment period:

- Compliance with the relevant noise criteria was achieved at all noise monitoring locations during the day period.
- Compliance with the relevant noise criteria was achieved at all noise monitoring locations during the evening period.
- Compliance with the relevant noise criteria was achieved at all noise monitoring locations during the night period.

Based on the measured DCM noise contribution compliance with the relevant sleep disturbance noise criteria was achieved at all noise monitoring locations during the night-time noise monitoring period.

Maximum Duralie Shuttle rail pass-by noise levels were below 85 dBA at all monitoring locations, including the sounding of horns on approach to level crossings.

---

# APPENDIX A

## Acoustic Terminology

## 1 Sound Level or Noise Level

The terms “sound” and “noise” are almost interchangeable, except that in common usage “noise” is often used to refer to unwanted sound.

Sound (or noise) consists of minute fluctuations in atmospheric pressure capable of evoking the sense of hearing. The human ear responds to changes in sound pressure over a very wide range. The loudest sound pressure to which the human ear responds is ten million times greater than the softest. The decibel (abbreviated as dB) scale reduces this ratio to a more manageable size by the use of logarithms.

The symbols SPL, L or  $L_p$  are commonly used to represent Sound Pressure Level. The symbol LA represents A-weighted Sound Pressure Level. The standard reference unit for Sound Pressure Levels expressed in decibels is 2E-5 Pa.

## 2 “A” Weighted Sound Pressure Level

The overall level of a sound is usually expressed in terms of dBA, which is measured using a sound level meter with an “A-weighting” filter. This is an electronic filter having a frequency response corresponding approximately to that of human hearing.

People’s hearing is most sensitive to sounds at mid frequencies (500 Hz to 4000 Hz), and less sensitive at lower and higher frequencies. Thus, the level of a sound in dBA is a good measure of the loudness of that sound. Different sources having the same dBA level generally sound about equally loud.

A change of 1 dBA or 2 dBA in the level of a sound is difficult for most people to detect, whilst a 3 dBA to 5 dBA change corresponds to a small but noticeable change in loudness. A 10 dBA change corresponds to an approximate doubling or halving in loudness. The table below lists examples of typical noise levels

Sound Pressure Level (dBA)	Typical Source	Subjective Evaluation
130	Threshold of pain	Intolerable
120 110	Heavy rock concert Grinding on steel	Extremely noisy
100 90	Loud car horn at 3 m Construction site with pneumatic hammering	Very noisy
80 70	Kerbside of busy street Loud radio or television	Loud
60 50	Department store General Office	Moderate to quiet
40 30	Inside private office Inside bedroom	Quiet to very quiet
20	Unoccupied recording studio	Almost silent

Other weightings (eg B, C and D) are less commonly used than A-weighting. Sound Levels measured without any weighting are referred to as “linear”, and the units are expressed as dB(Z).

## 3 Sound Power Level

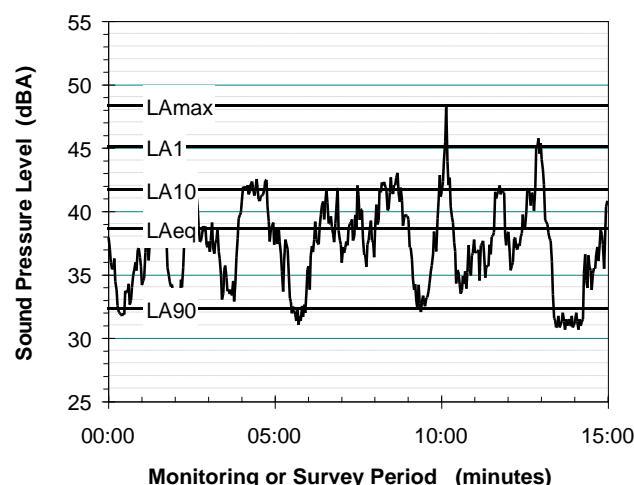
The Sound Power of a source is the rate at which it emits acoustic energy. As with Sound Pressure Levels, Sound Power Levels are expressed in decibel units (dB or dBA), but may be identified by the symbols SWL or LW, or by the reference unit 1E-12 W.

The relationship between Sound Power and Sound Pressure may be likened to an electric radiator, which is characterised by a power rating, but has an effect on the surrounding environment that can be measured in terms of a different parameter, temperature.

## 4 Statistical Noise Levels

Sounds that vary in level over time, such as road traffic noise and most community noise, are commonly described in terms of the statistical exceedance levels  $L_{AN}$ , where  $L_{AN}$  is the A-weighted sound pressure level exceeded for N% of a given measurement period. For example, the  $L_{A1}$  is the noise level exceeded for 1% of the time,  $L_{A10}$  the noise level exceeded for 10% of the time, and so on.

The following figure presents a hypothetical 15 minute noise survey, illustrating various common statistical indices of interest.



Of particular relevance, are:

- $L_{A1}$  The noise level exceeded for 1% of the 15 minute interval.
- $L_{A10}$  The noise level exceeded for 10% of the 15 minute interval. This is commonly referred to as the average maximum noise level.
- $L_{A90}$  The noise level exceeded for 90% of the sample period. This noise level is described as the average minimum background sound level (in the absence of the source under consideration), or simply the background level.
- $L_{Aeq}$  The A-weighted equivalent noise level (basically the average noise level). It is defined as the steady sound level that contains the same amount of acoustical energy as the corresponding time-varying sound.

When dealing with numerous days of statistical noise data, it is sometimes necessary to define the typical noise levels at a given monitoring location for a particular time of day. A standardised method is available for determining these representative levels.

This method produces a level representing the “repeatable minimum”  $L_{A90}$  noise level over the daytime and night-time measurement periods, as required by the EPA. In addition the method produces mean or “average” levels representative of the other descriptors ( $L_{Aeq}$ ,  $L_{A10}$ , etc).

## 5 Tonality

Tonal noise contains one or more prominent tones (ie distinct frequency components), and is normally regarded as more offensive than “broad band” noise.

## 6 Impulsiveness

An impulsive noise is characterised by one or more short sharp peaks in the time domain, such as occurs during hammering.

### 7 Frequency Analysis

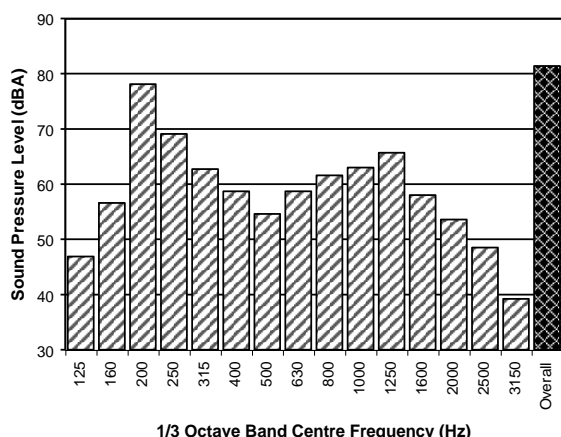
Frequency analysis is the process used to examine the tones (or frequency components) which make up the overall noise or vibration signal. This analysis was traditionally carried out using analogue electronic filters, but is now normally carried out using Fast Fourier Transform (FFT) analysers.

The units for frequency are Hertz (Hz), which represent the number of cycles per second.

Frequency analysis can be in:

- Octave bands (where the centre frequency and width of each band is double the previous band)
- 1/3 octave bands (3 bands in each octave band)
- Narrow band (where the spectrum is divided into 400 or more bands of equal width)

The following figure shows a 1/3 octave band frequency analysis where the noise is dominated by the 200 Hz band. Note that the indicated level of each individual band is less than the overall level, which is the logarithmic sum of the bands.



### 8 Vibration

Vibration may be defined as cyclic or transient motion. This motion can be measured in terms of its displacement, velocity or acceleration. Most assessments of human response to vibration or the risk of damage to buildings use measurements of vibration velocity. These may be expressed in terms of “peak” velocity or “rms” velocity.

The former is the maximum instantaneous velocity, without any averaging, and is sometimes referred to as “peak particle velocity”, or PPV. The latter incorporates “root mean squared” averaging over some defined time period.

Vibration measurements may be carried out in a single axis or alternatively as triaxial measurements. Where triaxial measurements are used, the axes are commonly designated vertical, longitudinal (aligned toward the source) and transverse.

The common units for velocity are millimetres per second (mm/s). As with noise, decibel units can also be used, in which case the reference level should always be stated. A vibration level  $V$ , expressed in mm/s can be converted to decibels by the formula  $20 \log (V/V_0)$ , where  $V_0$  is the reference level (1E-6 mm/s). Care is required in this regard, as other reference levels are used by some organizations.

### 9 Human Perception of Vibration

People are able to “feel” vibration at levels lower than those required to cause even superficial damage to the most susceptible classes of building (even though they may not be disturbed by the motion). An individual's perception of motion or response to vibration depends very strongly on previous experience and expectations, and on other connotations associated with the perceived source of the vibration. For example, the vibration that a person responds to as “normal” in a car, bus or train is considerably higher than what is perceived as “normal” in a shop, office or dwelling.

### 10 Over-Pressure

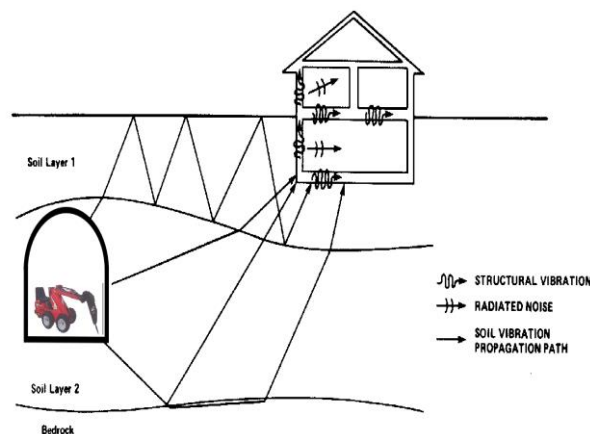
The term “over-pressure” is used to describe the air pressure pulse emitted during blasting or similar events. The peak level of an event is normally measured using a microphone in the same manner as linear noise (ie unweighted), at frequencies both in and below the audible range.

### 11 Regenerated Noise

Noise that propagates through a structure as vibration and is radiated by vibrating wall and floor surfaces is termed “regenerated noise”, “structure-borne noise”, or sometimes “ground-borne noise”. Regenerated noise originates as vibration and propagates between the source and receiver through the ground and/or building structural elements, rather than through the air.

Typical sources of regenerated noise include tunnelling works, underground railways, excavation plant (eg rockbreakers), and building services plant (eg fans, compressors and generators).

The following figure presents the various paths by which vibration and regenerated noise may be transmitted between a source and receiver for construction activities occurring within a tunnel.

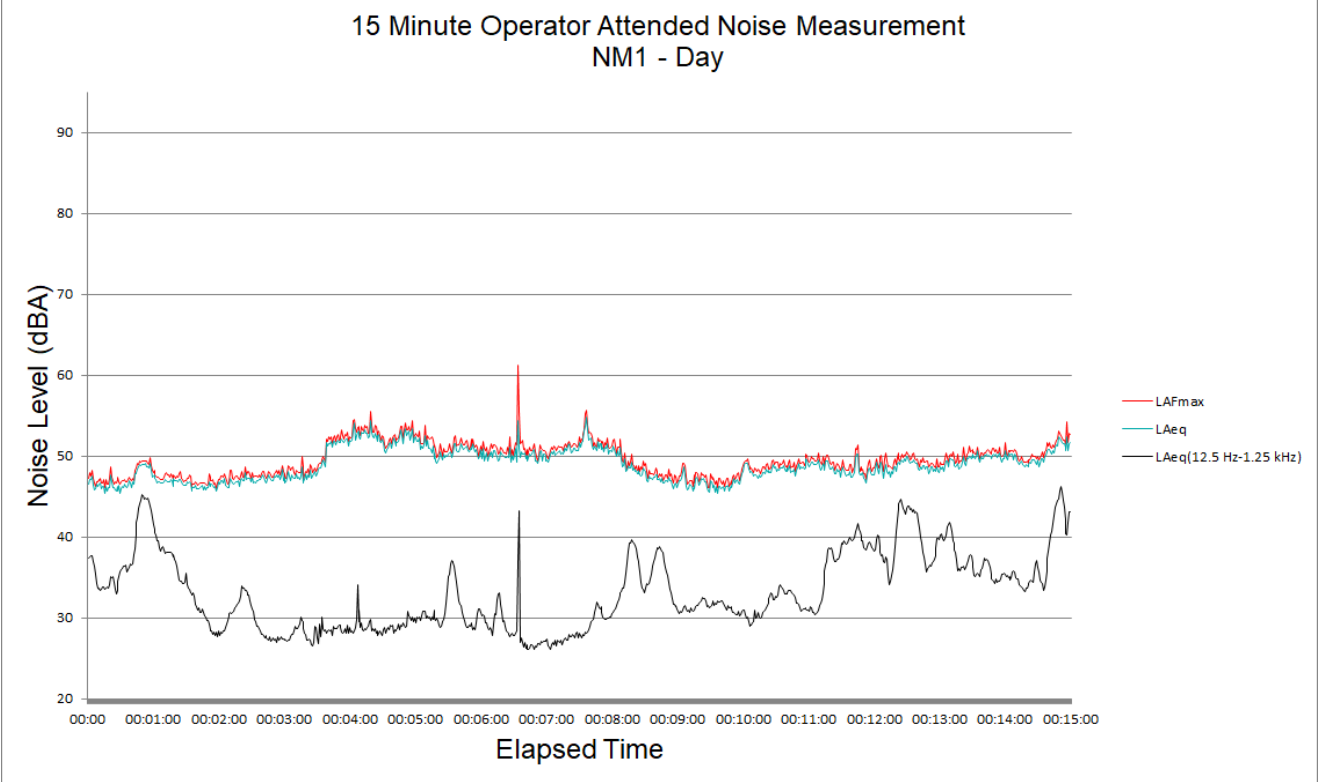


The term “regenerated noise” is also used to describe other types of noise that are emitted from the primary source as a different form of energy. One example would be a fan with a silencer, where the fan is the energy source and primary noise source. The silencer may effectively reduce the fan noise, but some additional noise may be created by the aerodynamic effect of the silencer in the airstream. This “secondary” noise may be referred to as regenerated noise.

# APPENDIX B

## Operator Attended Noise Survey Charts

**Figure B1 – Day Period – NM1 Operator Attended Noise Survey Results**



**Figure B2 – Evening Period – NM1 Operator Attended Noise Survey Results**

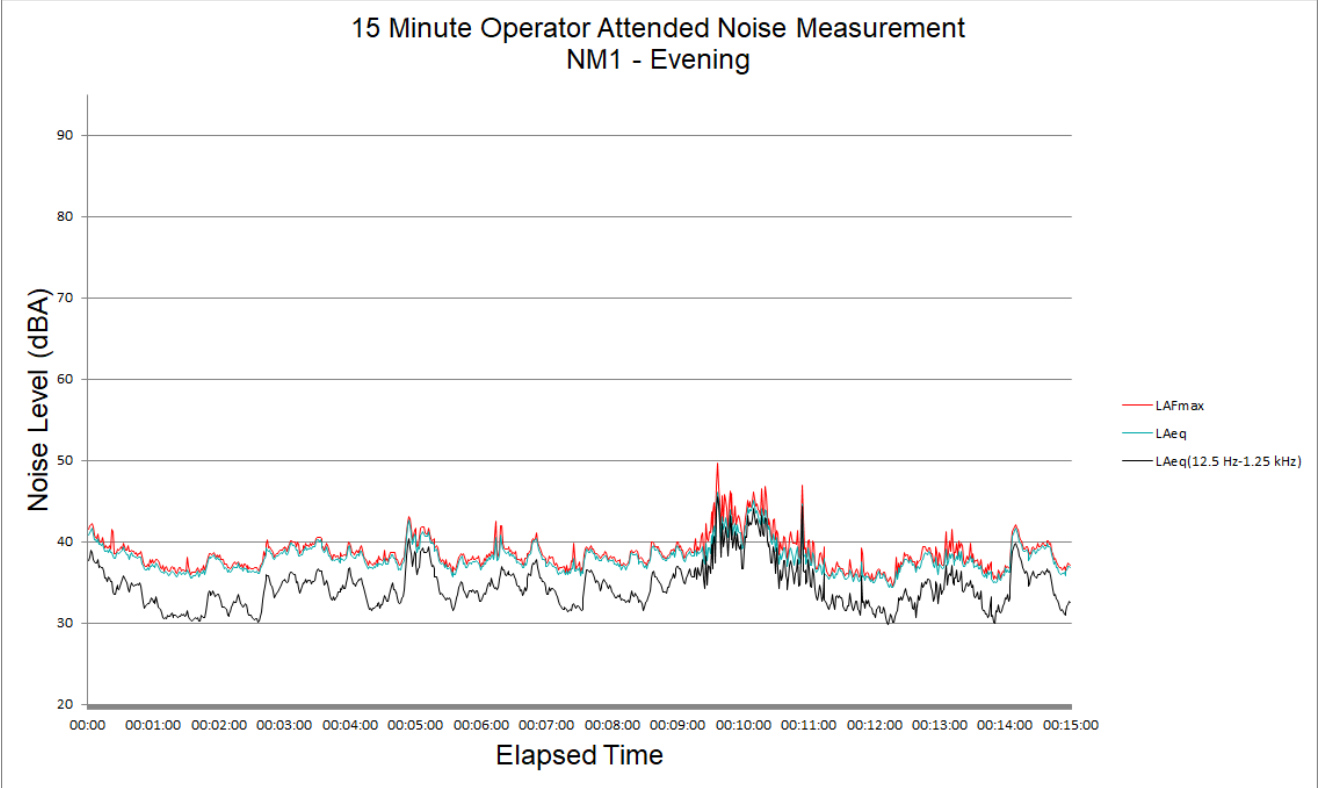


Figure B3 – Night-time Period – NM1 Operator Attended Noise Survey Results

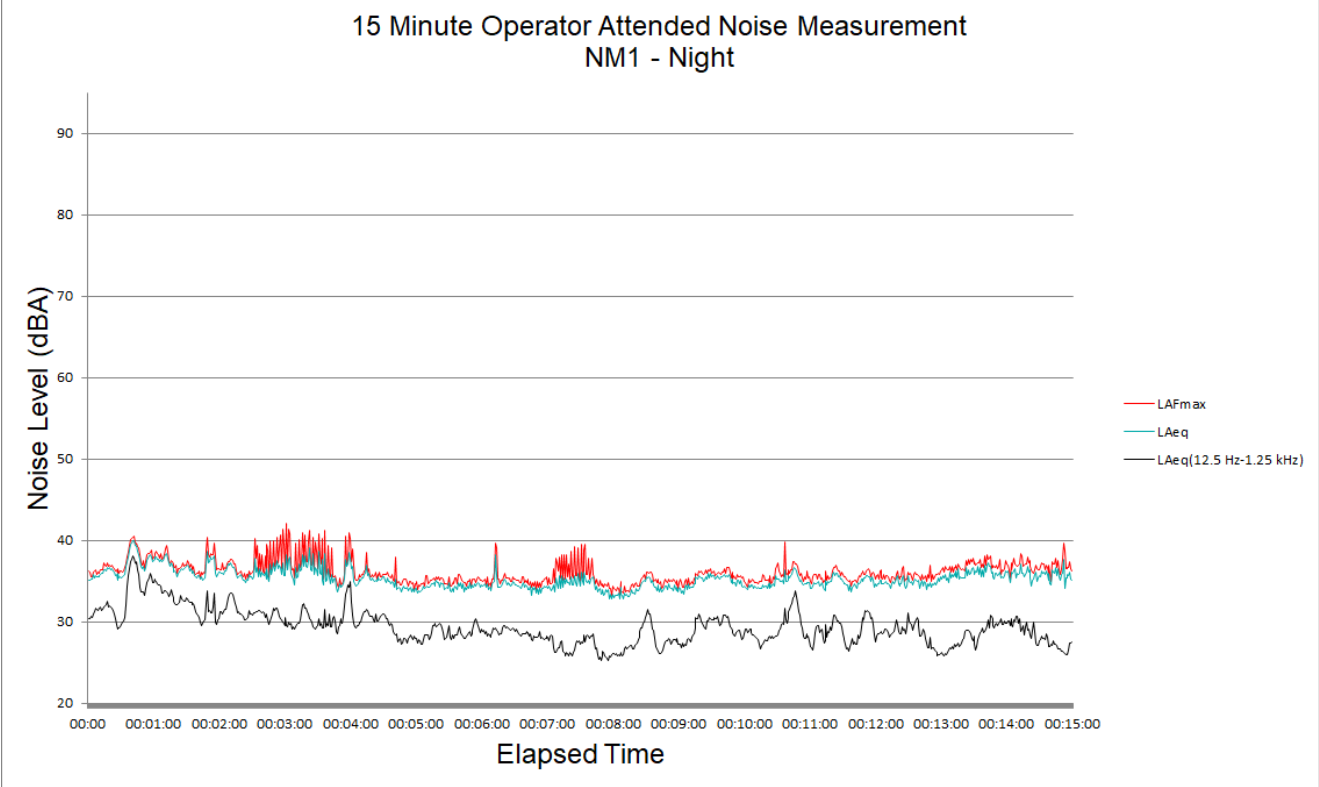


Figure B4 – Day Period – NM2 Operator Attended Noise Survey Results

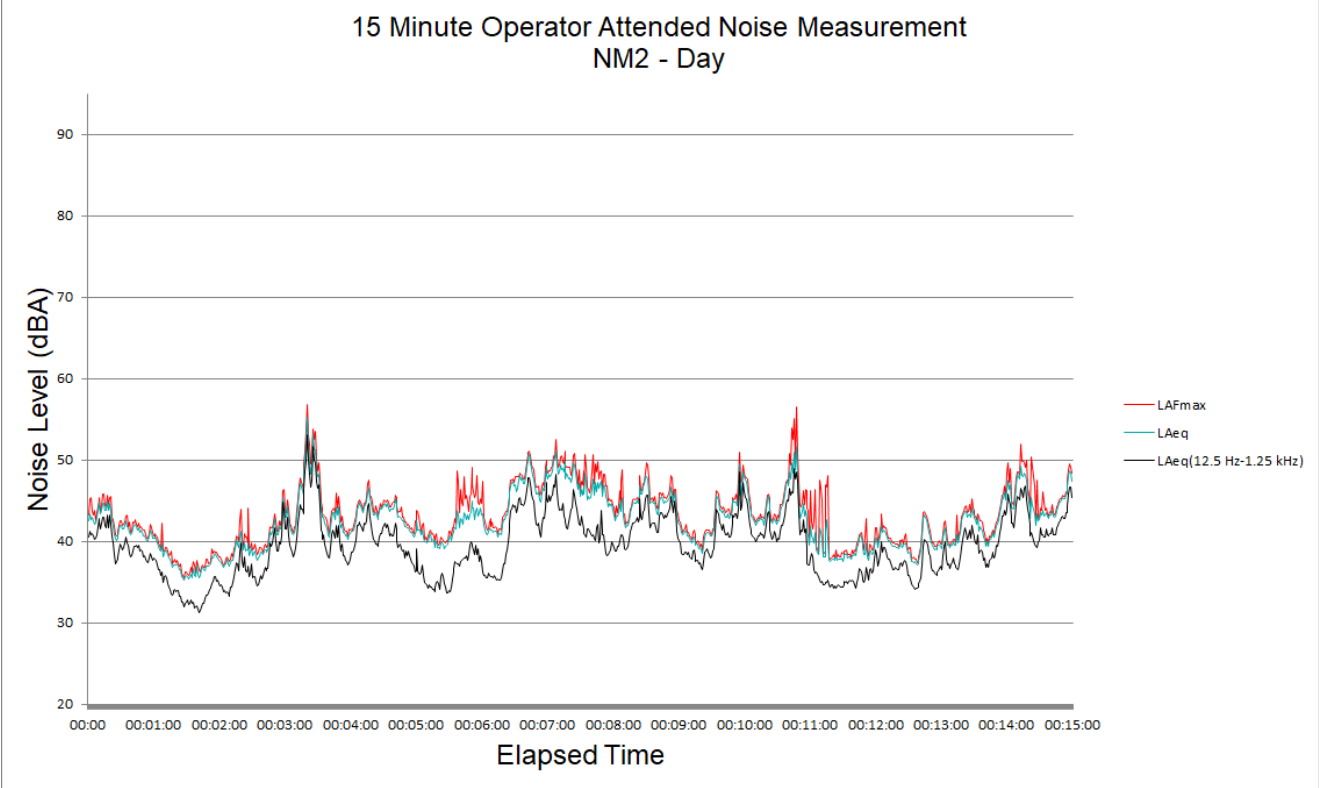




Figure B5 – Evening Period – NM2 Operator Attended Noise Survey Results

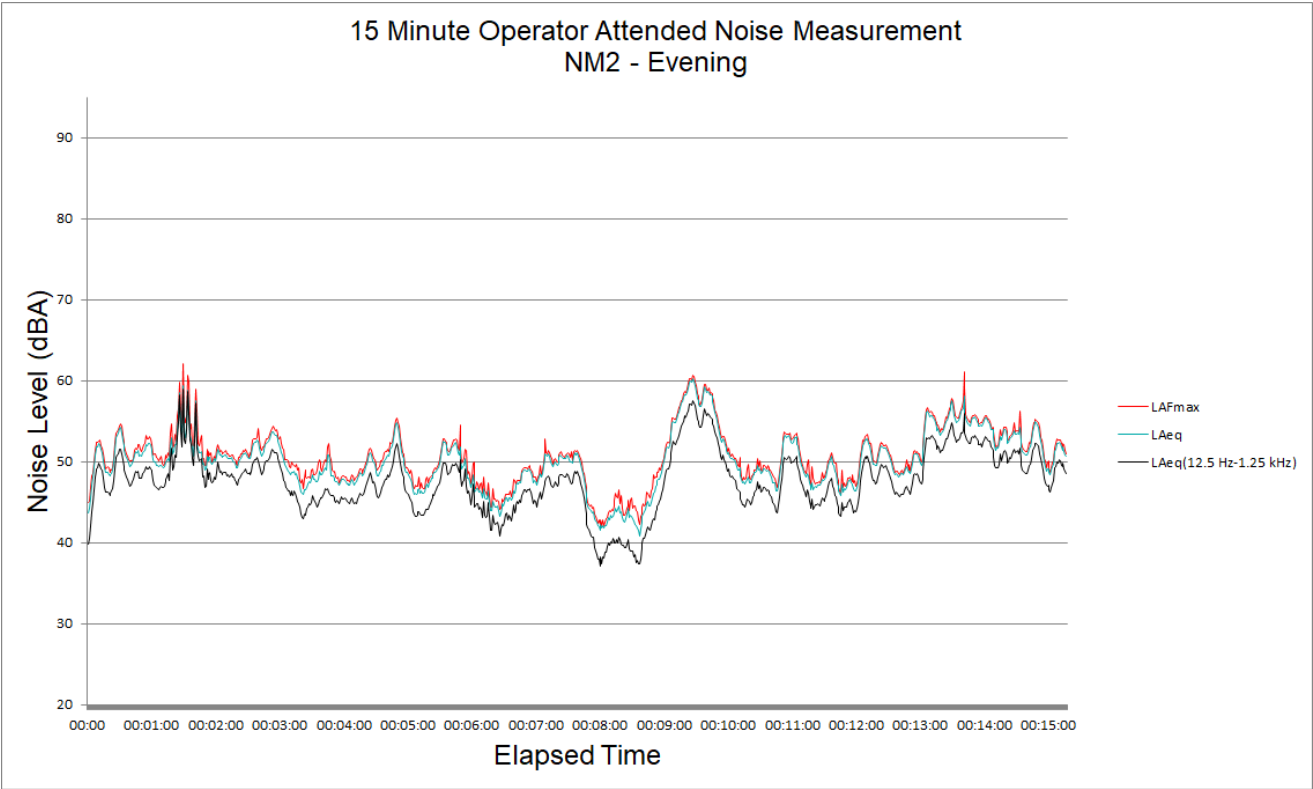


Figure B6 – Night-time Period – NM2 Operator Attended Noise Survey Results

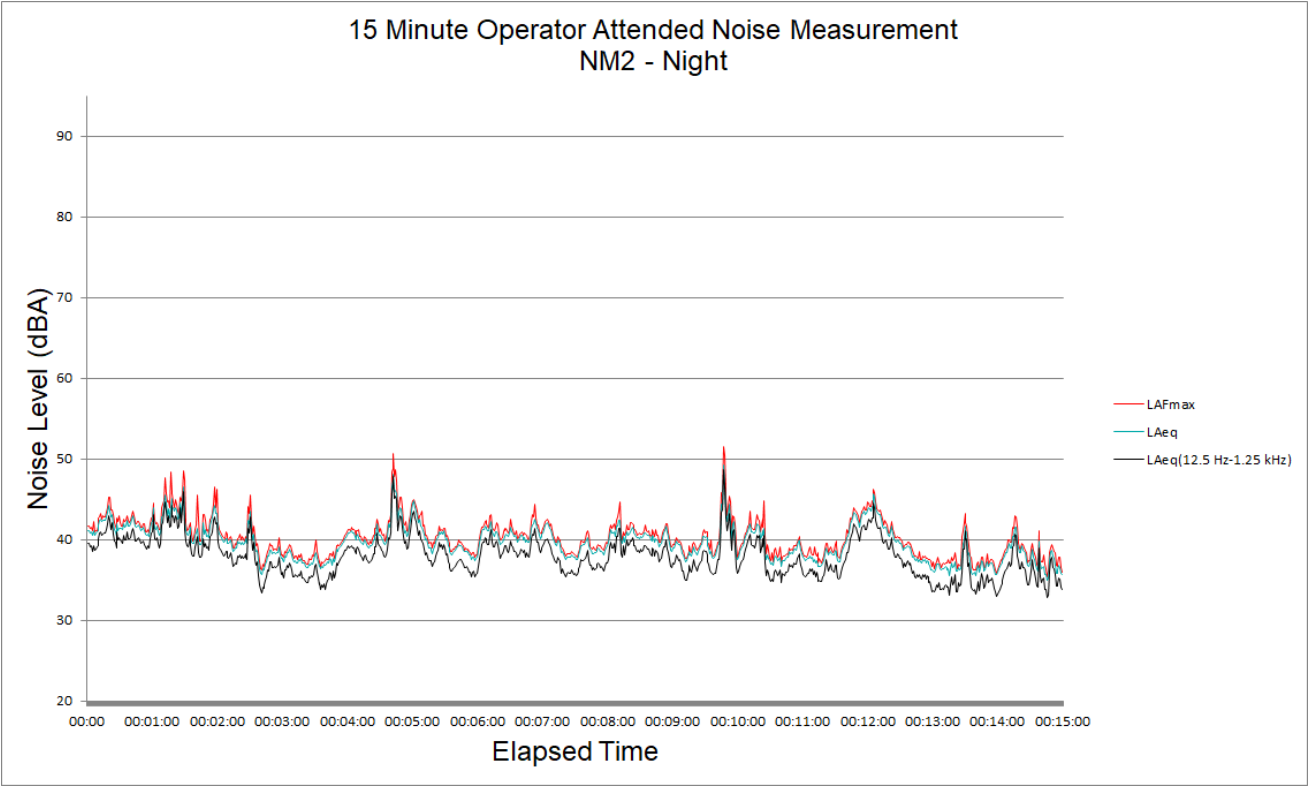


Figure B7 – Day Period – NM4 Operator Attended Noise Survey Results

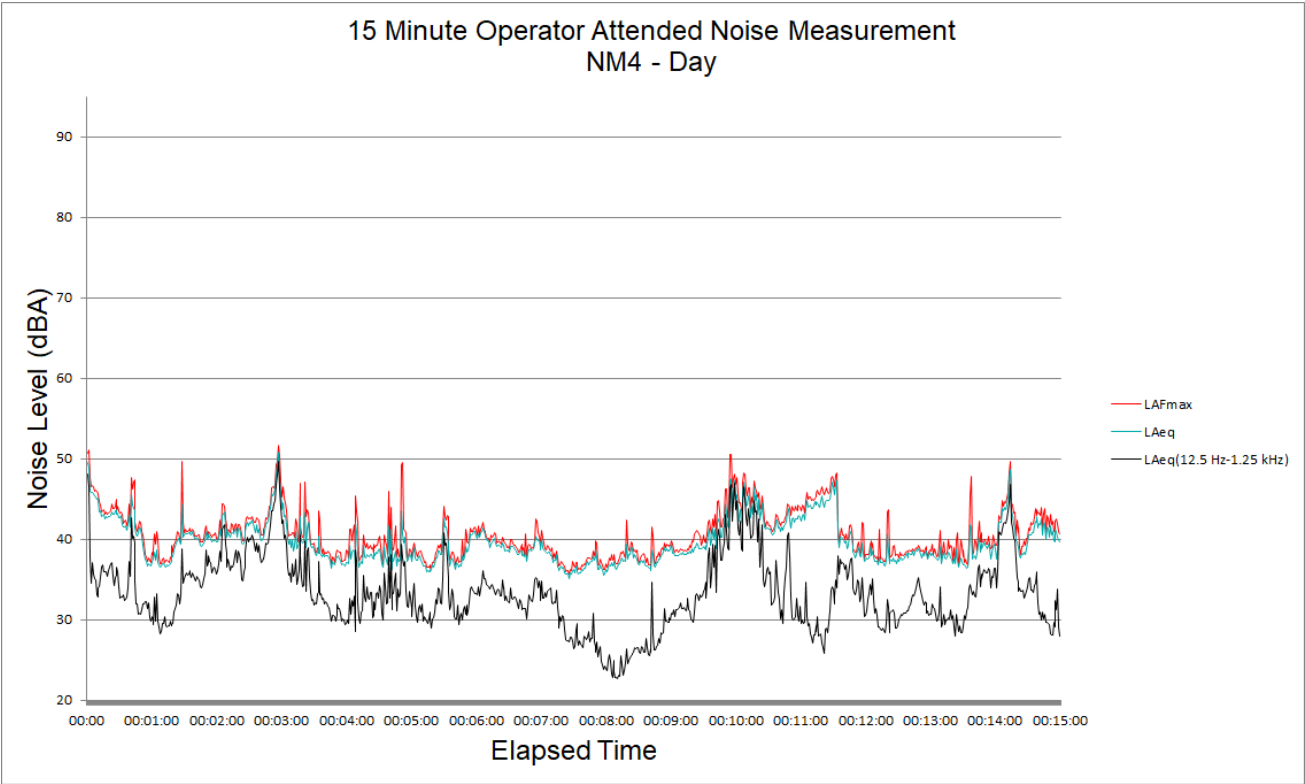


Figure B8 – Evening Period – NM4 Operator Attended Noise Survey Results

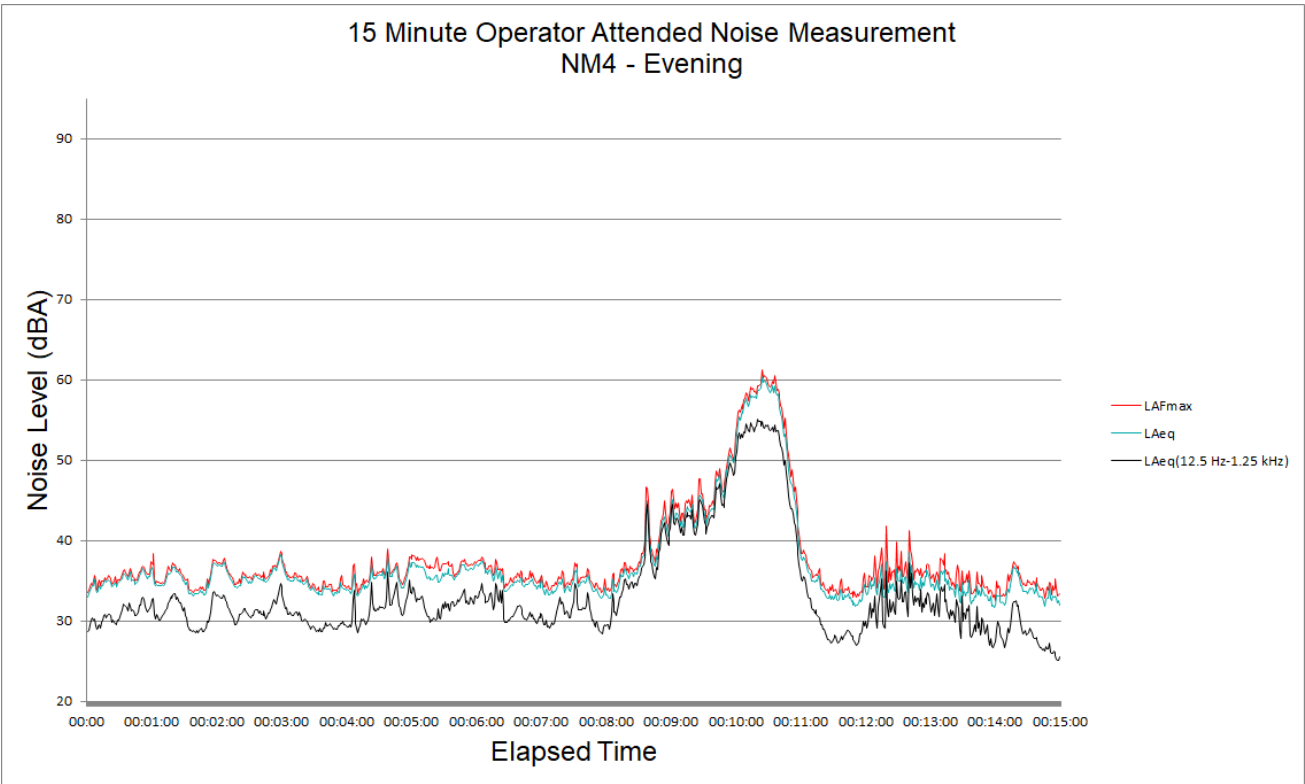


Figure B9 – Night-time Period – NM4 Operator Attended Noise Survey Results

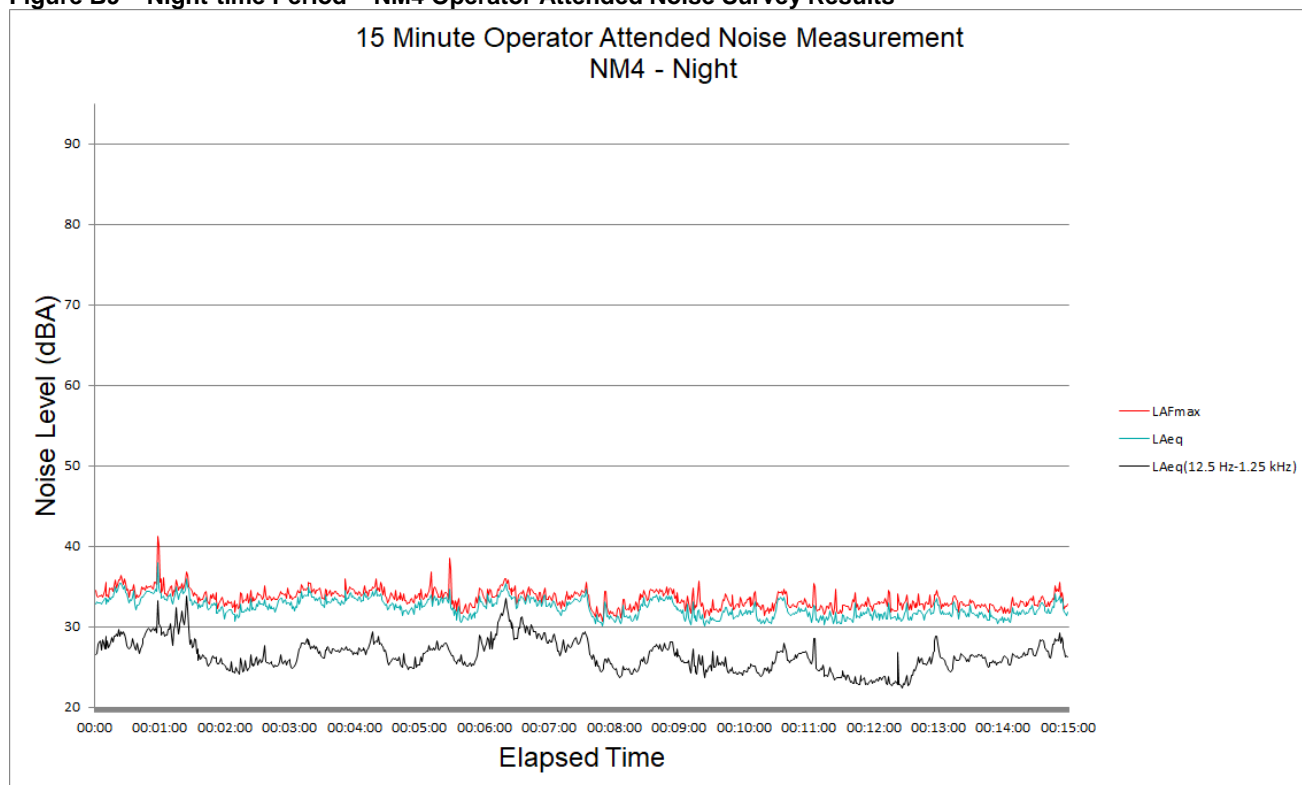


Figure B10 – Day Period – NM5 Operator Attended Noise Survey Results

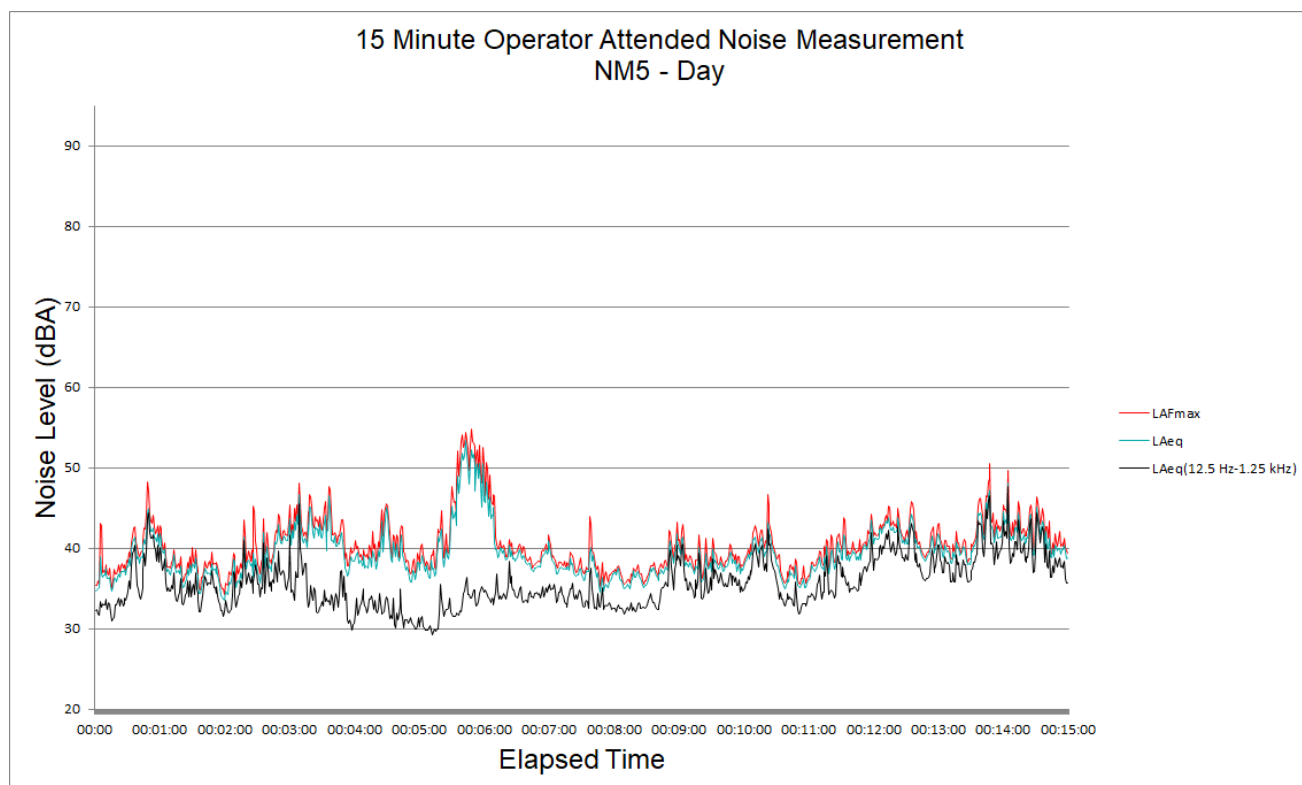


Figure B11 – Evening Period – NM5 Operator Attended Noise Survey Results

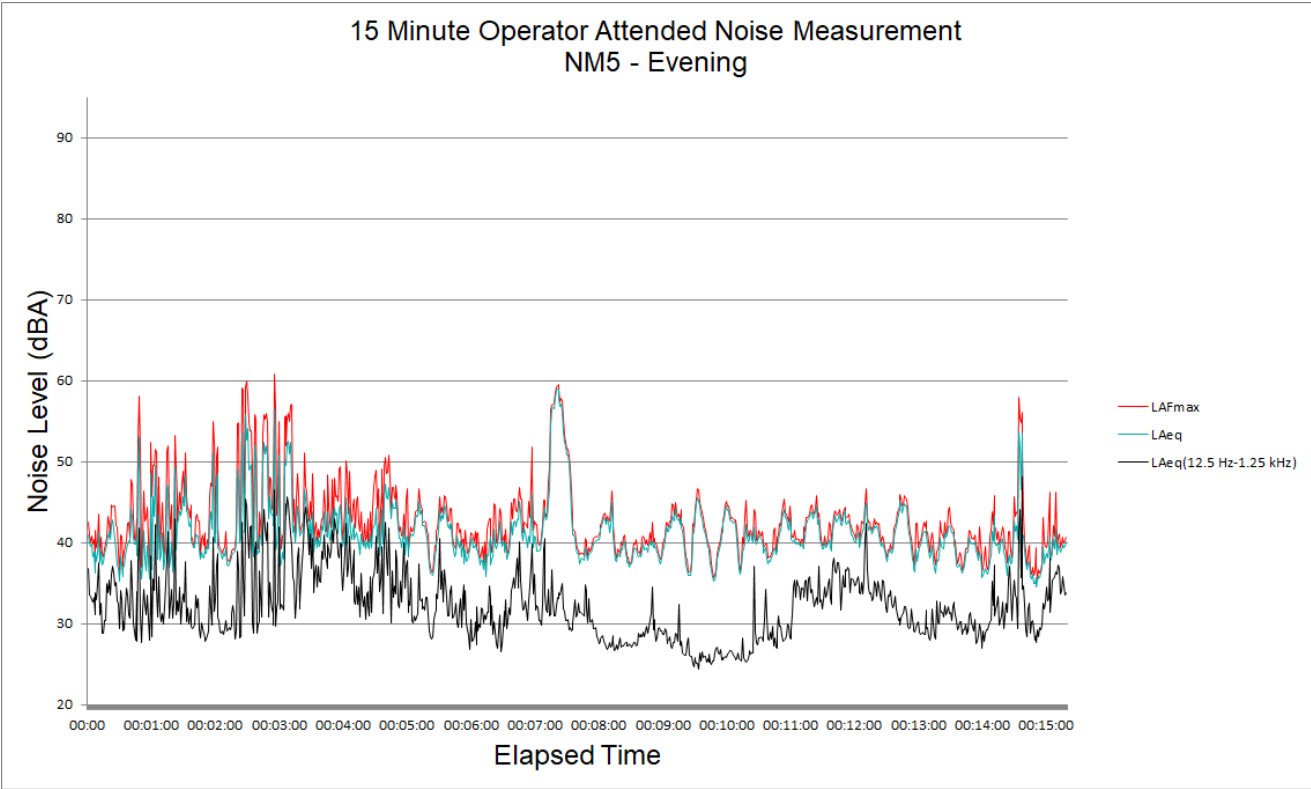


Figure B12 – Night-time Period – NM5 Operator Attended Noise Survey Results

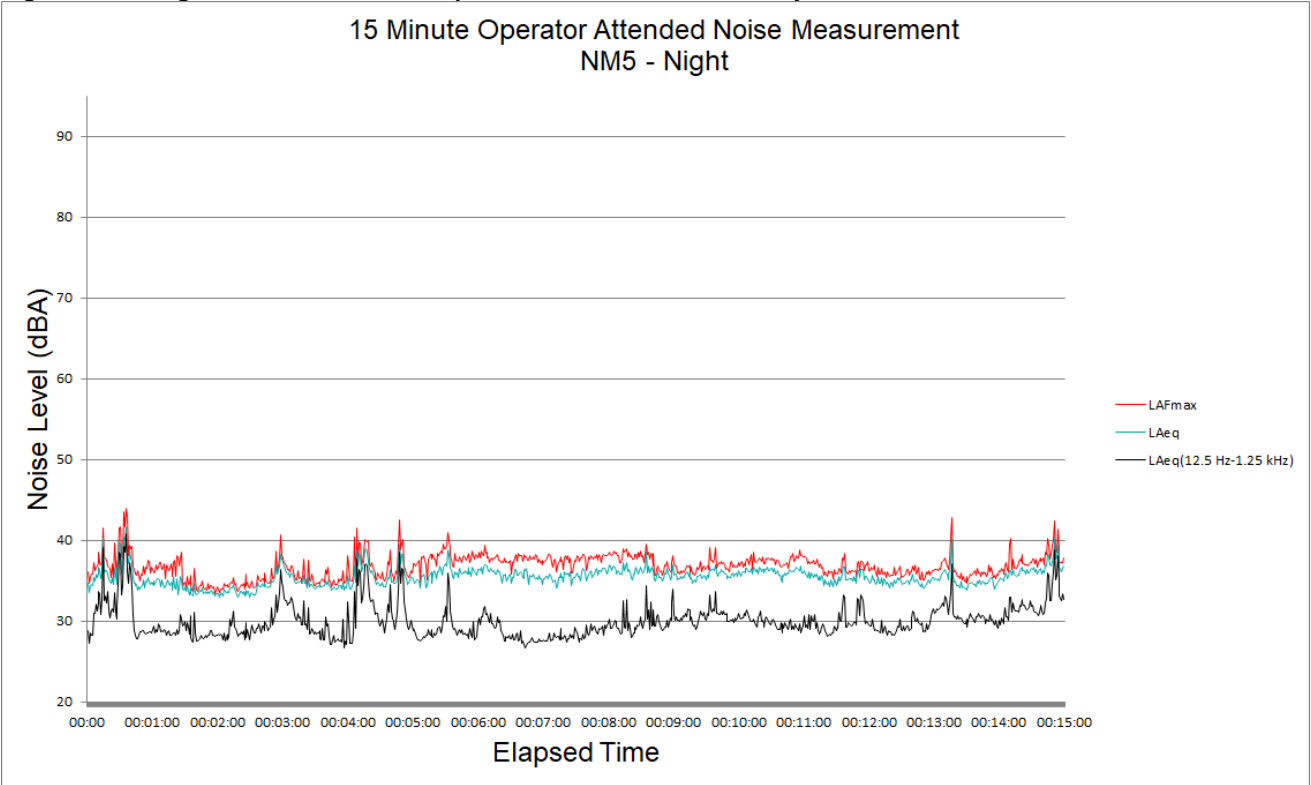


Figure B13 – Day Period – WR1 Operator Attended Noise Survey Results

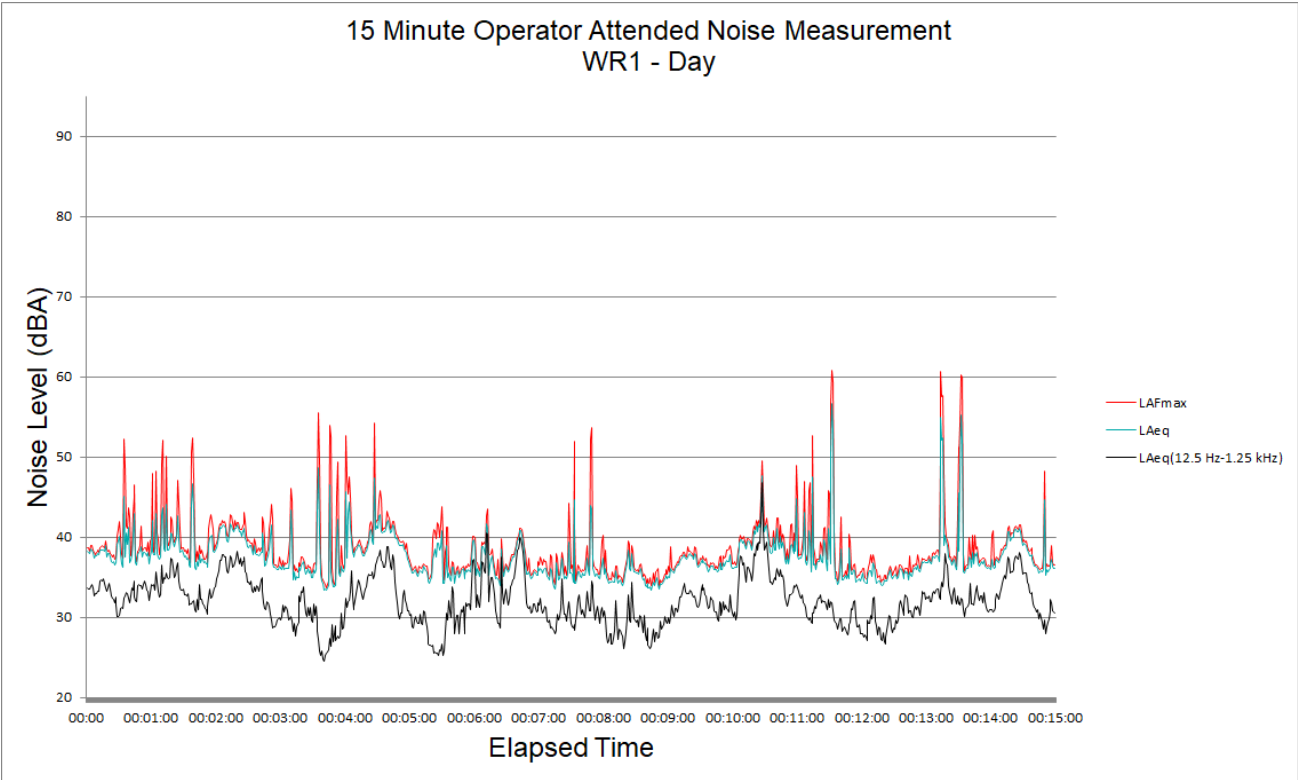


Figure B14 – Evening Period – WR2 Operator Attended Noise Survey Results

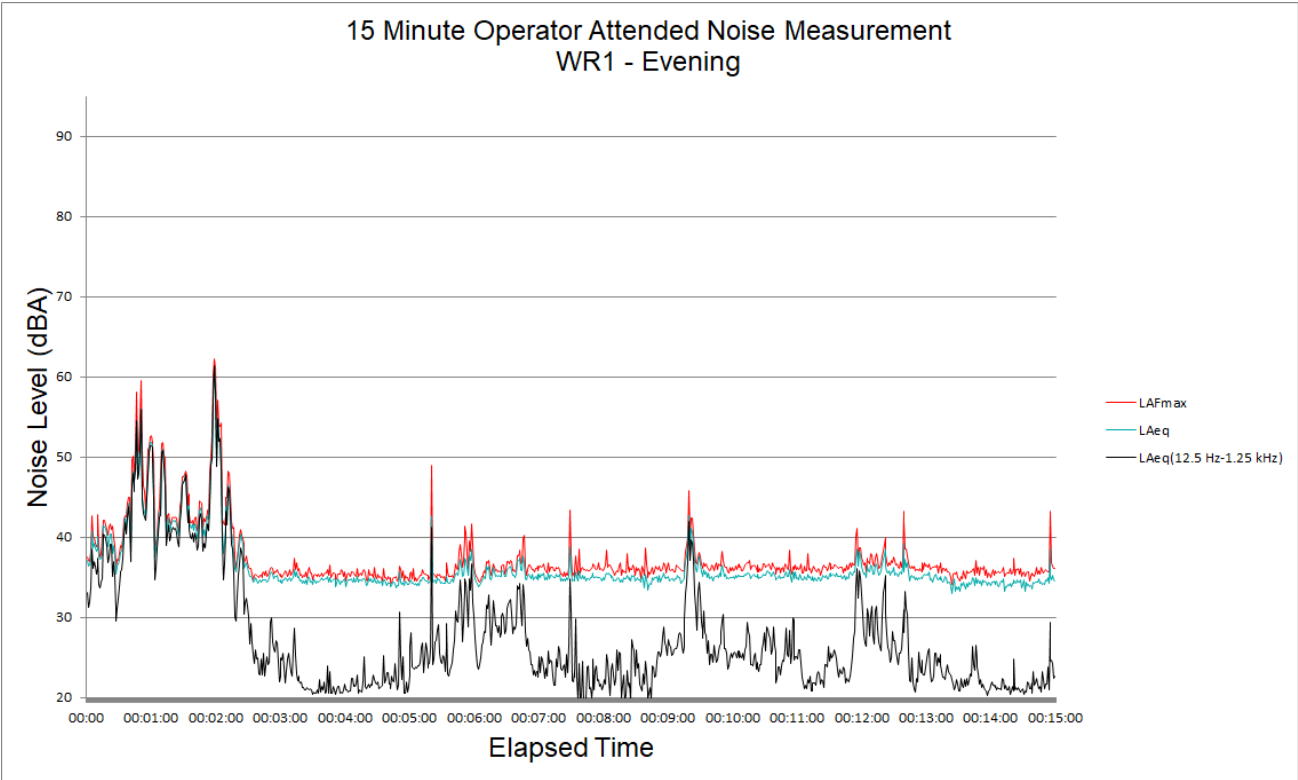
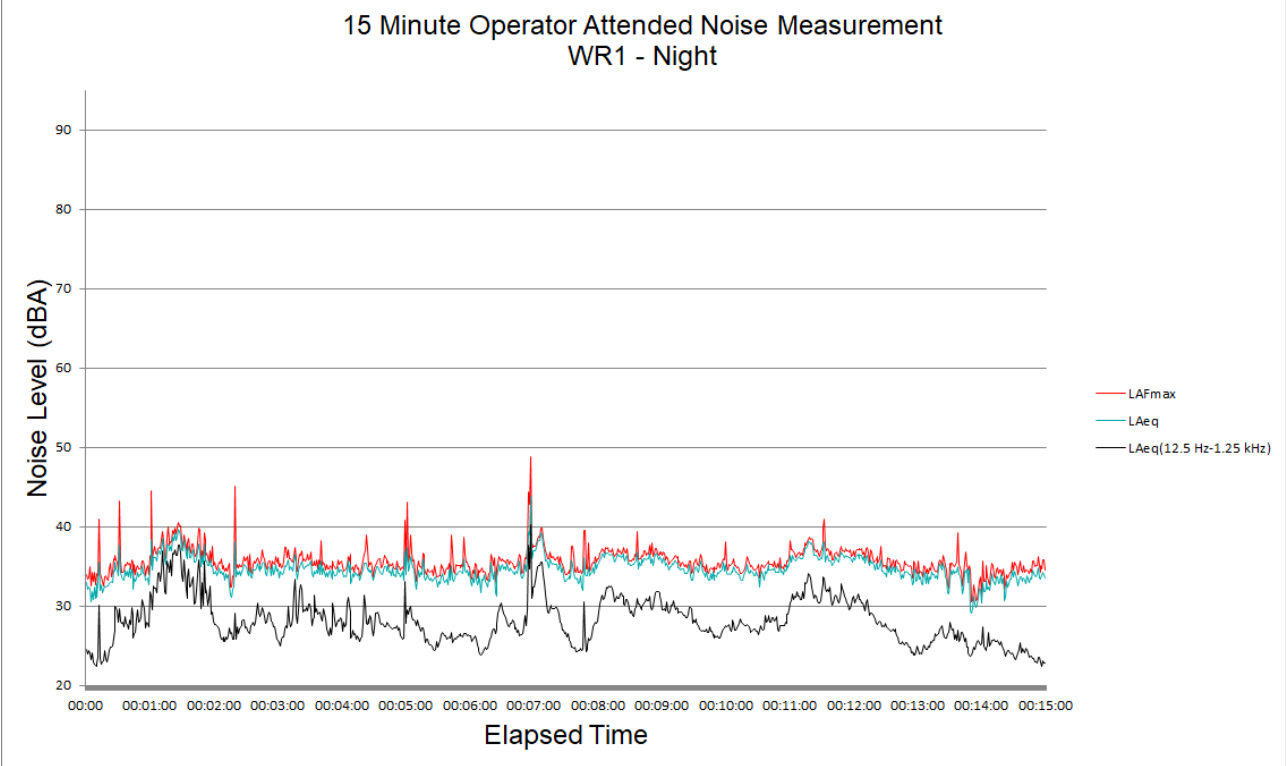


Figure B15 – Night-time Period – WR3 Operator Attended Noise Survey Results



## ASIA PACIFIC OFFICES

### BRISBANE

Level 2, 15 Astor Terrace  
Spring Hill QLD 4000  
Australia  
T: +61 7 3858 4800  
F: +61 7 3858 4801

### MELBOURNE

Suite 2, 2 Domville Avenue  
Hawthorn VIC 3122  
Australia  
T: +61 3 9249 9400  
F: +61 3 9249 9499

### SYDNEY

2 Lincoln Street  
Lane Cove NSW 2066  
Australia  
T: +61 2 9427 8100  
F: +61 2 9427 8200

### AUCKLAND

68 Beach Road  
Auckland 1010  
New Zealand  
T: +64 27 441 7849

### CANBERRA

GPO 410  
Canberra ACT 2600  
Australia  
T: +61 2 6287 0800  
F: +61 2 9427 8200

### NEWCASTLE

10 Kings Road  
New Lambton NSW 2305  
Australia  
T: +61 2 4037 3200  
F: +61 2 4037 3201

### TAMWORTH

PO Box 11034  
Tamworth NSW 2340  
Australia  
M: +61 408 474 248  
F: +61 2 9427 8200

### NELSON

5 Duncan Street  
Port Nelson 7010  
New Zealand  
T: +64 274 898 628

### DARWIN

5 Foelsche Street  
Darwin NT 0800  
Australia  
T: +61 8 8998 0100  
F: +61 2 9427 8200

### PERTH

Ground Floor, 503 Murray Street  
Perth WA 6000  
Australia  
T: +61 8 9422 5900  
F: +61 8 9422 5901

### TOWNSVILLE

Level 1, 514 Sturt Street  
Townsville QLD 4810  
Australia  
T: +61 7 4722 8000  
F: +61 7 4722 8001

### NEW PLYMOUTH

Level 2, 10 Devon Street East  
New Plymouth 4310  
New Zealand  
T: +64 0800 757 695

### MACKAY

21 River Street  
Mackay QLD 4740  
Australia  
T: +61 7 3181 3300

### ROCKHAMPTON

rockhampton@slrconsulting.com  
M: +61 407 810 417